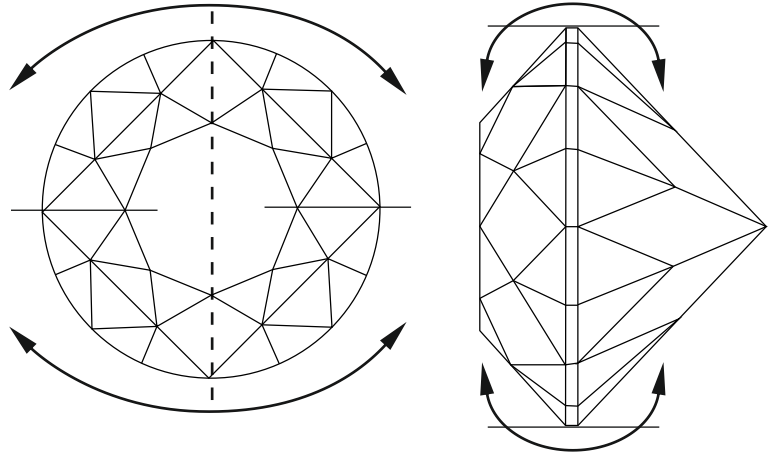


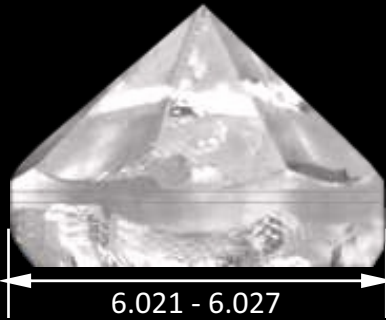


EOS Econo-MarkII Bruter



The Perfect Girdle

To achieve ideal symmetry, the perfect round girdle is the key.

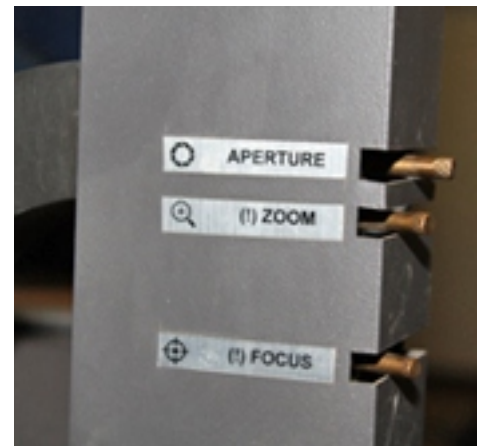
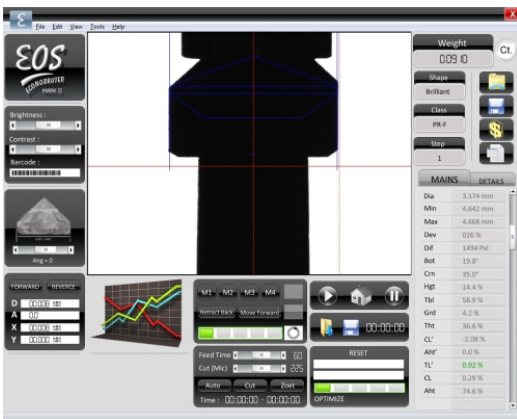


EOS Econo Mark II controls



Introduction

- To achieve ideal symmetry, the perfect round girdle is the key. The laboratory demands are growing. So is the demand from consumers.
- A product jointly developed by HRD, Antwerp and Lexus SoftMac, India.



Salient Features

- Improved Computer Vision with Digital camera with Facilities to Zoom, adjust Exposure and Focus.
- 1 cent to 500 carat in a single machine with facility to adjust zoom factor using ZOOM Lens.
- Excellent Roundness between 0.005 to 0.020.
- Automatic roundness measurement on screen.
- Perfect beardless round girdle is guaranteed due to its Micro stepping intelligent algorithm.
- Back Light for automatic Measurement like AutoBruter.
- Completely new GUI with user friendly on screen controls using just Mouse and / or keyboard.
- GIA Lab Support.
- To cover Entire screen the diamond image is oriented specifically 90 degree via camera to have larger coverage of Diamond in 4:3(800 X 600 pixels) Aspect ratio. The Diamond height is always around 50% to 70% of its diameter.

Specification

➔ Field of view	:	User Definable (to maximize accuracy)
➔ Diamond Types	:	Any model with precut table-Round Brilliant Cut / Marquise
➔ Weight (W/o Comp.)	:	80 Kgs.
➔ Dimention	:	L 730 x H 590 x D 590 mm (excluding computer system)
➔ Supply	:	230 V AC, 50Hz, 1Phase
➔ Maximum Power	:	0.5Kw
➔ No Load Current	:	1Amp (excluding computer system)
➔ Temperature	:	min. 5° - mx. 35°
➔ Rpm scaife	:	1400 rpm
➔ Rpm stone	:	120 rpm
➔ Stroking speed	:	15 strokes/min
➔ Bruting modes	:	Complete automatic with user defined cycles, Zoet mode
➔ Lighting	:	Advance controlled dual DC LED light with luminance control
➔ Controls	:	All controls "On screen", controllable with Mouse / Key Board
➔ LAN configurability	:	Possible to configure in LAN with complete automation & report printing
➔ Warranty	:	24 months manufacturing warranty (12 months for free service)

Diamond holding : <ul style="list-style-type: none"> Between pots Glued to 13mm pot 	Shapes : <ul style="list-style-type: none"> Rounds 	Sizes : <ul style="list-style-type: none"> From 0.05 Ct To 500 Cts 	Extra Accessories : <ul style="list-style-type: none"> Centering machine for Rounds while using glued makeable stones. Centering machine for Marquise. Portable Refractometer.
--	--	--	--

